

Flute

Major Scales

C concert

Db concert

Musical notation for the C concert and Db concert major scales. The C concert scale is shown in treble clef with a key signature of one sharp (F#). The Db concert scale is shown in bass clef with a key signature of two flats (Bb, Eb). Both scales are written as ascending and descending eighth-note patterns.

D concert

Eb concert

Musical notation for the D concert and Eb concert major scales. The D concert scale is in treble clef with a key signature of two sharps (F#, C#). The Eb concert scale is in bass clef with a key signature of three flats (Bb, Eb, Ab). Both scales are written as ascending and descending eighth-note patterns.

E concert

F concert

Musical notation for the E concert and F concert major scales. The E concert scale is in treble clef with a key signature of three sharps (F#, C#, G#). The F concert scale is in bass clef with a key signature of one flat (Bb). Both scales are written as ascending and descending eighth-note patterns.

F# concert

G concert

Musical notation for the F# concert and G concert major scales. The F# concert scale is in treble clef with a key signature of four sharps (F#, C#, G#, D#). The G concert scale is in treble clef with a key signature of one sharp (F#). Both scales are written as ascending and descending eighth-note patterns.

Ab concert

A concert

Musical notation for the Ab concert and A concert major scales. The Ab concert scale is in treble clef with a key signature of four flats (Bb, Eb, Ab, Db). The A concert scale is in treble clef with a key signature of three sharps (F#, C#, G#). Both scales are written as ascending and descending eighth-note patterns.

Bb concert

B concert

Musical notation for the Bb concert and B concert major scales. The Bb concert scale is in treble clef with a key signature of two flats (Bb, Eb). The B concert scale is in treble clef with a key signature of two sharps (F#, C#). Both scales are written as ascending and descending eighth-note patterns.

Major Scales

C concert

Db concert



D concert

Eb concert



E concert

F concert



F# concert

G concert



Ab concert

A concert



Bb concert

B concert



Clarinet

Major Scales

C concert

Db concert



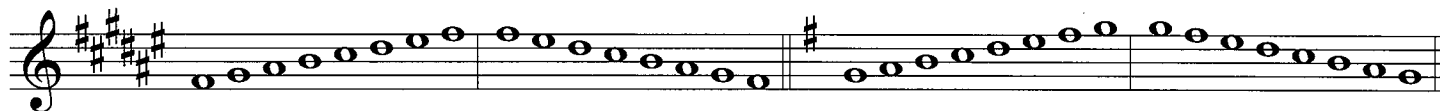
D concert

Eb concert



E concert

F concert



F# concert

G concert



Ab concert

A concert



Bb concert

B concert



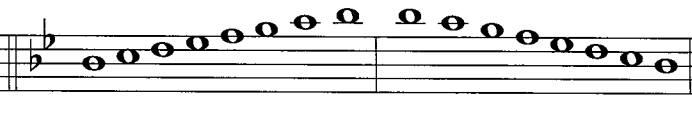
Major Scales

C concert



Musical notation for the C major scale, consisting of two staves. The first staff shows the ascending scale with a key signature of three sharps (F#, C#, G#). The second staff shows the descending scale.

Db concert



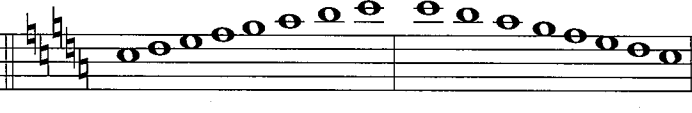
Musical notation for the D-flat major scale, consisting of two staves. The first staff shows the ascending scale with a key signature of two flats (Bb, Fb). The second staff shows the descending scale.

D concert



Musical notation for the D major scale, consisting of two staves. The first staff shows the ascending scale with a key signature of two sharps (F#, C#). The second staff shows the descending scale.

Eb concert



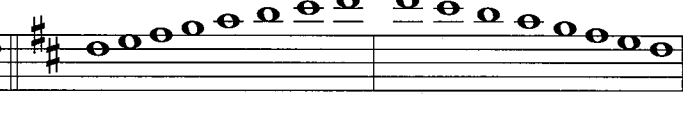
Musical notation for the E-flat major scale, consisting of two staves. The first staff shows the ascending scale with a key signature of three flats (Bbb, Fb, Cb). The second staff shows the descending scale.

E concert



Musical notation for the E major scale, consisting of two staves. The first staff shows the ascending scale with a key signature of one sharp (F#). The second staff shows the descending scale.

F concert



Musical notation for the F major scale, consisting of two staves. The first staff shows the ascending scale with a key signature of one flat (Bb). The second staff shows the descending scale.

F# concert



Musical notation for the F-sharp major scale, consisting of two staves. The first staff shows the ascending scale with a key signature of two sharps (F#, C#). The second staff shows the descending scale.

G concert



Musical notation for the G major scale, consisting of two staves. The first staff shows the ascending scale with a key signature of one sharp (F#). The second staff shows the descending scale.

Ab concert



Musical notation for the A-flat major scale, consisting of two staves. The first staff shows the ascending scale with a key signature of two flats (Bb, Fb). The second staff shows the descending scale.

A concert



Musical notation for the A major scale, consisting of two staves. The first staff shows the ascending scale with a key signature of three sharps (F#, C#, G#). The second staff shows the descending scale.

Bb concert



Musical notation for the B-flat major scale, consisting of two staves. The first staff shows the ascending scale with a key signature of two flats (Bb, Fb). The second staff shows the descending scale.

B concert



Musical notation for the B major scale, consisting of two staves. The first staff shows the ascending scale with a key signature of two sharps (F#, C#). The second staff shows the descending scale.

Tenor Sax

Major Scales

C concert

Db concert



D concert

Eb concert



E concert

F concert



F# concert

G concert



Ab concert

A concert



Bb concert

B concert



Trumpet

Major Scales

C concert

Db concert



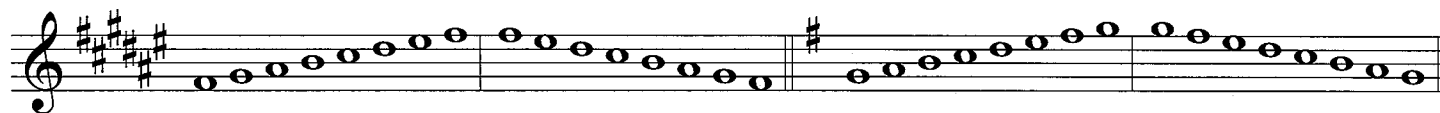
D concert

Eb concert



E concert

F concert



F# concert

G concert



Ab concert

A concert



Bb concert

B concert



Horn

Major Scales

C concert

Db concert

Musical notation for the C concert and Db concert major scales. The C concert scale is written in treble clef with one sharp (F#) and consists of two measures: C4-D4-E4-F4-G4-A4-B4-C5 and C5-B4-A4-G4-F4-E4-D4-C4. The Db concert scale is written in bass clef with two flats (Bb, Eb) and consists of two measures: Db3-Cb3-Bb3-Ab3-Gb3-Fb3-Eb3-Db4 and Db4-Cb4-Bb4-Ab4-Gb4-Fb4-Eb4-Db5.

D concert

Eb concert

Musical notation for the D concert and Eb concert major scales. The D concert scale is written in treble clef with two sharps (F#, C#) and consists of two measures: D4-E4-F#4-G4-A4-B4-C#5 and D5-C#5-B4-A4-G4-F#4-E4-D4. The Eb concert scale is written in bass clef with three flats (Bb, Eb, Ab) and consists of two measures: Eb3-D3-C3-Bb3-A3-G3-Fb3-Eb4 and Eb4-D4-C4-Bb4-A4-G4-Fb4-Eb5.

E concert

F concert

Musical notation for the E concert and F concert major scales. The E concert scale is written in treble clef with three sharps (F#, C#, G#) and consists of two measures: E4-F#4-G#4-A4-B4-C#5 and E5-D#5-C#5-B4-A4-G#4-F#4-E4. The F concert scale is written in bass clef with one flat (Bb) and consists of two measures: F3-G3-A3-Bb3-C4-D4-E4-F4 and F4-E4-D4-C4-Bb4-A4-G4-F4.

F# concert

G concert

Musical notation for the F# concert and G concert major scales. The F# concert scale is written in treble clef with four sharps (F#, C#, G#, D#) and consists of two measures: F#4-G#4-A4-B4-C#5 and F#5-E#5-D#5-C#5-B4-A4-G#4-F#4. The G concert scale is written in treble clef with two sharps (F#, C#) and consists of two measures: G4-A4-B4-C#5 and G5-F#5-E#5-D#5-C#5-B4-A4-G4.

Ab concert

A concert

Musical notation for the Ab concert and A concert major scales. The Ab concert scale is written in treble clef with three flats (Bb, Eb, Ab) and consists of two measures: Ab3-G3-F3-Eb3-D3-C3-Bb3-Ab4 and Ab4-G4-F4-Eb4-D4-C4-Bb4-Ab5. The A concert scale is written in treble clef with three sharps (F#, C#, G#) and consists of two measures: A4-B4-C#5 and A5-G#5-F#5-E#5-D#5-C#5-B4-A4.

Bb concert

B concert

Musical notation for the Bb concert and B concert major scales. The Bb concert scale is written in bass clef with two flats (Bb, Eb) and consists of two measures: Bb3-A3-G3-Fb3-Eb3-D3-C3-Bb4 and Bb4-A4-G4-Fb4-Eb4-D4-C4-Bb5. The B concert scale is written in treble clef with two sharps (F#, C#) and consists of two measures: B4-C#5 and B5-A#5-G#5-F#5-E#5-D#5-C#5-B4.

Major Scales

C concert

Db concert

Two musical staves in bass clef. The first staff shows the C major scale (C4 to C5) with a natural sign on the C below the staff. The second staff shows the Db major scale (Db3 to Db5) with a flat sign on the Db below the staff.

D concert

Eb concert

Two musical staves in bass clef. The first staff shows the D major scale (D4 to D5) with a sharp sign on the D below the staff. The second staff shows the Eb major scale (Eb3 to Eb5) with a flat sign on the Eb below the staff.

E concert

F concert

Two musical staves in bass clef. The first staff shows the E major scale (E4 to E5) with sharp signs on the F and C below the staff. The second staff shows the F major scale (F4 to F5) with a flat sign on the F below the staff.

F# concert

G concert

Two musical staves in bass clef. The first staff shows the F# major scale (F#4 to F#5) with sharp signs on the F, C, and G below the staff. The second staff shows the G major scale (G4 to G5) with sharp signs on the F and C below the staff.

Ab concert

A concert

Two musical staves in bass clef. The first staff shows the Ab major scale (Ab3 to Ab5) with a flat sign on the Ab below the staff. The second staff shows the A major scale (A4 to A5) with sharp signs on the B and F below the staff.

Bb concert

B concert

Two musical staves in bass clef. The first staff shows the Bb major scale (Bb3 to Bb5) with a flat sign on the Bb below the staff. The second staff shows the B major scale (B4 to B5) with sharp signs on the B, F, and C below the staff.

Tuba

Major Scales

C concert

Db concert



D concert

Eb concert



E concert

F concert



F# concert

G concert



Ab concert

A concert



Bb concert

B concert

